

CEPTEST Server Version

The CEPTEST Server Version is designed for testing ep2 Servers with mass data and stress tests. It is intended to be used by acquirers and other server operators to simulate high load situations for quality assurance.

Key Features:

Simulate 100 parallel authorisation requests
 Generate submission files based on authorisations
 Add Off-line authorisations to submission files
 Add proprietary EMV data elements and certificates to messages

The Server Version contains all features of the Standard Version and in addition:

- **Multithread Clients**

The ability to send up to 100 parallel messages to a server within few milliseconds

- **Recording of Submission Files**

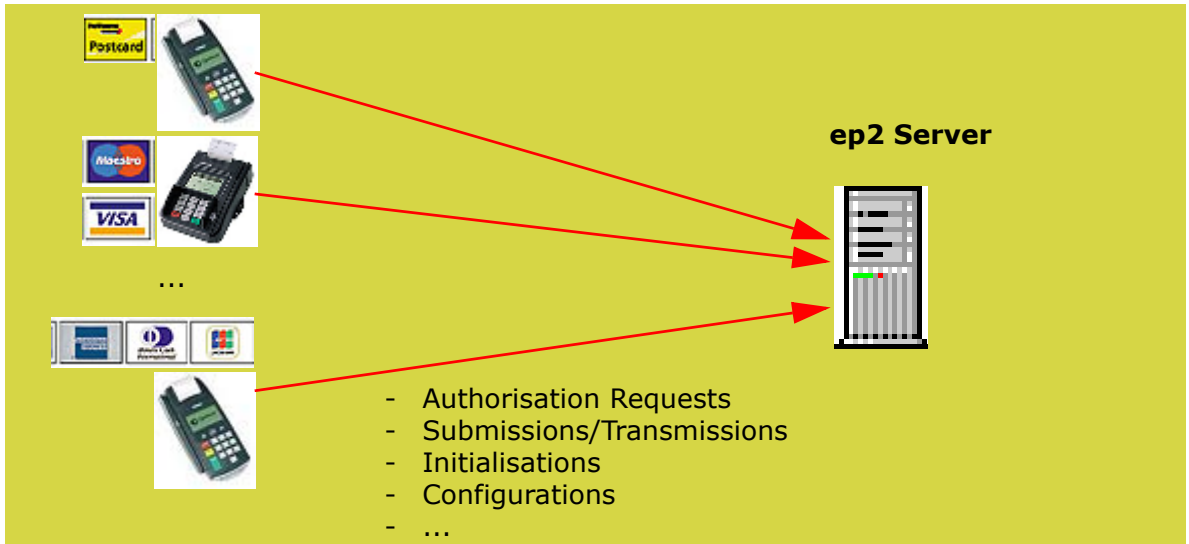
Capturing authorisation requests and responses for submission/transmission purposes

- **Plug Ins**

Support of user supplied plug ins, which modify XML documents of outgoing messages and check XML documents of incoming messages



Multithread Clients

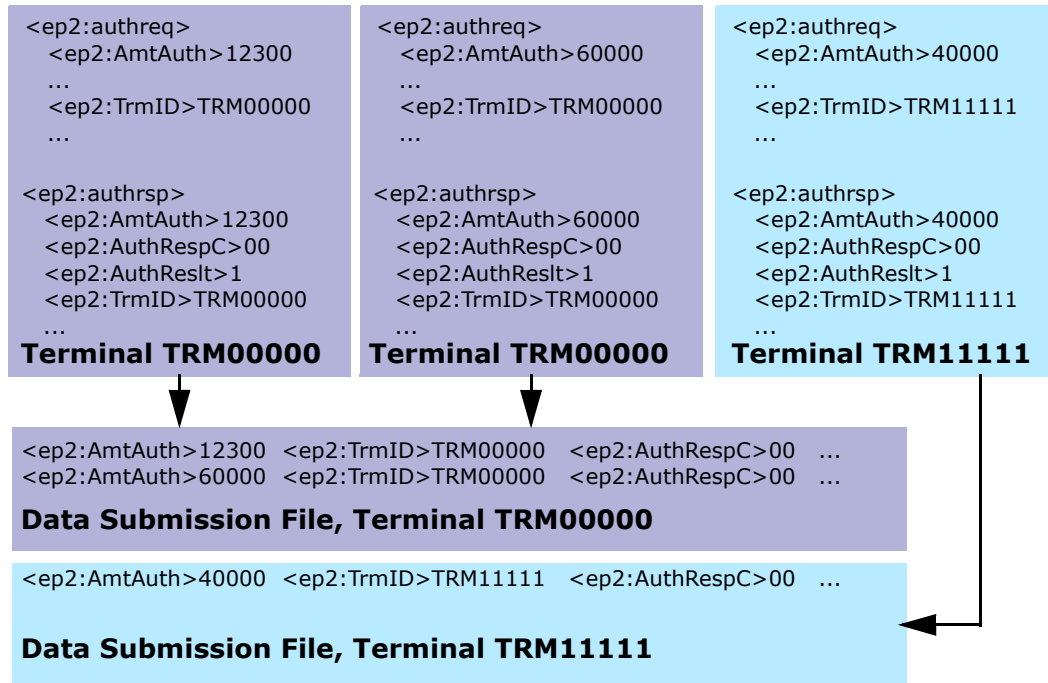


Features

- Multithread Clients are used within automated sequences of messages send to and expected from the host.
- Up to 100 parallel messages send within few milliseconds
- Each message contains its own terminal, card and amount data
- Different session keys and other security features for each message
- Authorisations may be followed by a reversal, which uses the necessary data elements of the authorisation
- Authorisations may be recorded for submission and/or transmission
- Session Starts, Submissions... may be send in parallel too.
- Responses from the server are analysed for correct encryption, security features, mandatory elements and correct fix value elements
- Configurable logging
- Statistics like execution time, number of errors...

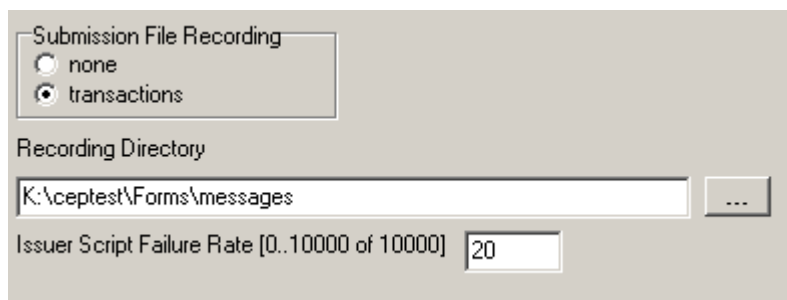
CEPTEST creates first all data streams, without sending them. When all data streams are ready, CEPTEST establishes all TCP/IP connections and sends the data streams to the server. Each message may pick its terminal ID, card data, amount... from a value pool. Also all other features of CEPTEST messages like 'Automatic Update' of values, plug ins... are fully available. In short, this feature simulates e.g. 100 terminals requesting authorisation at the same time, or 100 terminals requesting configuration.

Recording of Submission Files



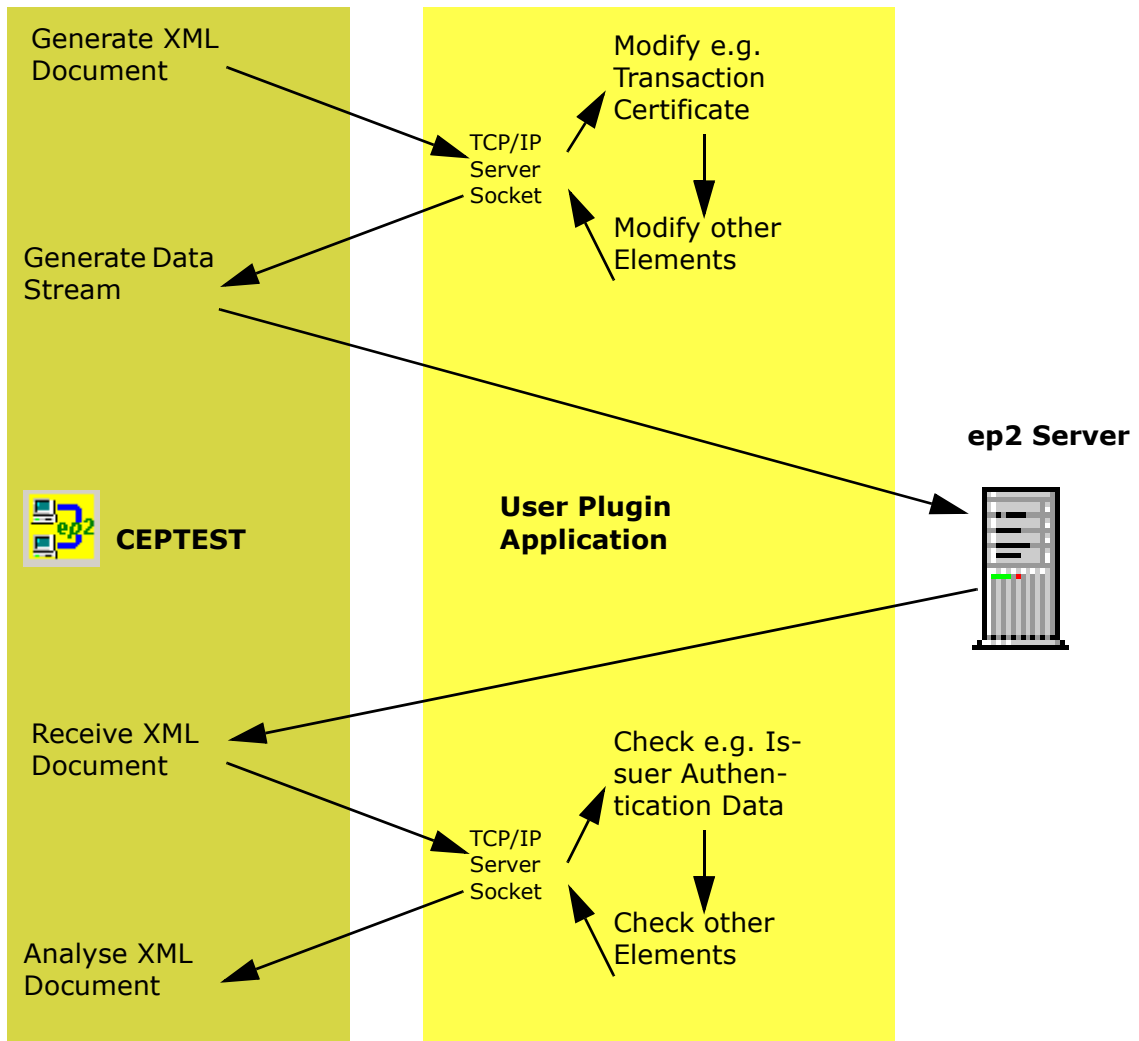
Features

- Recording during automated sequences of authorisations
- Recording of On- and Off-line authorisations. Off line authorisations are not sent, but used for recording only.
- Generating of Acquirer Transaction Certificates
- Generating of Issuer Script Results for Issuer Script Commands. A user defined statistical failure rate for issuer script commands allows to generate issuer script commands that fail. Failing issuer script commands are also reflected in the Terminal Verification Results
- Response time measurement
- Separate files are created for different terminals
- Submission of recorded files per terminal or (like from a PMS) for multiple terminals



Plug Ins

The purpose of Plug Ins is to allow CEPTEST users to add elements like Transaction Certificates, Issuer Authentication Data... in a message. Such elements contain proprietary means how they are computed.



Features

- Uses TCP/IP Communication with the User Plug In Application
- Sends outgoing XML-documents to a user plug in, which can modify any elements
- Sends incoming XML-documents to a user plug in for inspection of proprietary elements
- Also available for Multithread Clients

System Requirements, Ordering and Pricing

The CEPTEST Server Version is available as upgrade of corporate licenses of the standard version. Its price is CHF 2200.- for corporate license upgrade.

System Requirements are a average business PC with Windows 2000/XP.

Users of the Server Version receive a different license password to enter. An upgrade does not require a new installation of CEPTEST.

For orders, just send a mail to info@celsi.ch. We will provide you a password, which you need to enter into your CEPTEST application at first start-up.

Services from CELSI AG

CELSI offers a full scale of installation and advice services to ep2 developers and operators including:

- Installation and setup of a CEPTEST Watchdog for your Server Application
- Installation and setup of Stress Tests for your Server Application
- Programming of Plug In Applications to cover your proprietary needs

Services at CELSI are reasonable priced. Please contact us for more information.

CELSI AG
Museumstr. 76
CH-8400 Winterthur
Tel. 052 212 63 03
Fax 052 212 66 78
www.celsi.ch
info@celsi.ch